

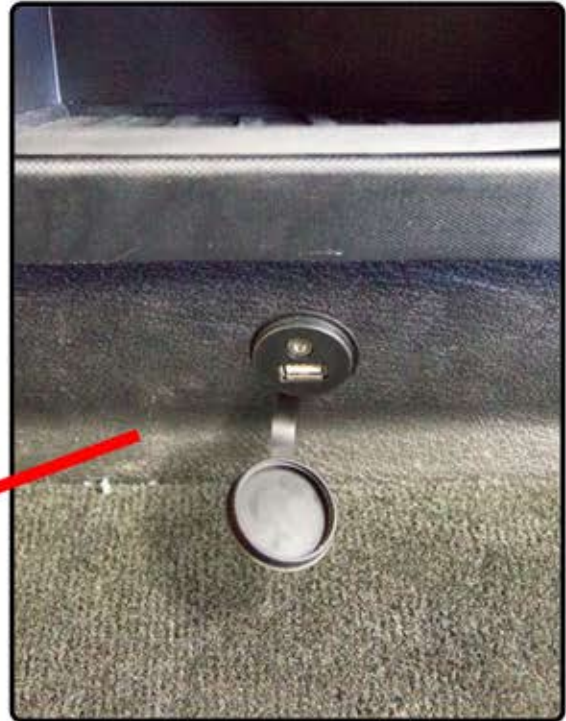
X009-FD1 Ford Sync USB/AUX Port Retention Tech Bulletin

This will allow you to retain the Ford Sync USB/AUX port

Due to the limited space in the KTX-009-FD1 radio bezel, the Ford Sync ports could not be accommodated in the same location. Follow the instructions below to relocate the USB and AUX ports. (3rd party parts are required)



Trim the plastic below the pocket in vehicles without a center console according to the 3rd party extension of your choice. If vehicle has a center console place the after market extension ports inside of it. (see 3rd party parts image below)



Mount the new extension port and run the cables behind the headunit.



Connect the cables to the corresponding SYNC connections and secure them.



The 3rd party extensions above have been tested and are recommended for the use of this modification.