

1. Installation Notes and and Connections Sequence: (Read the instruction manual! Many common questions can be avoided reading this document first before installation!)

- Vehicle battery must be disconnected prior to start of installation
- All system connections/harnesses must be plugged in before re-connecting the vehicle battery lead.

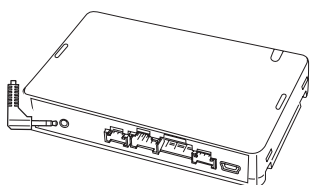
Warning: Failure to follow this instruction may cause a communication problem between the X009 and Maestro module. In severe cases this is not recoverable and the X009 will need to be replaced.

2. Maestro module led flashing red:

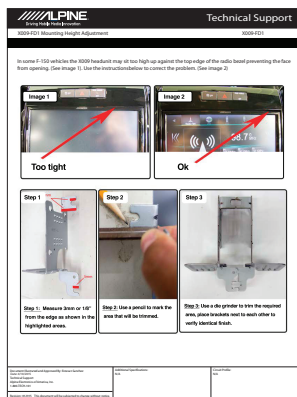
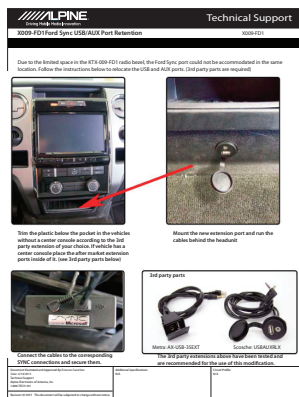
- Check the data cable between the X009 and Maestro module if this cable is connected properly, re-flash the Maestro module.

3. No audio from OEM sources (SXM, Turn Signals, On Star, and SYNC)

- 3.5mm audio lead between Maestro module and X009 is not securely plugged in.
- Ensure that OEM SXM is selected in the Maestro setup.

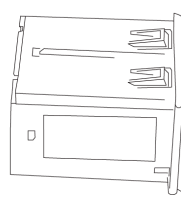
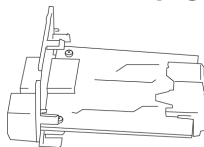
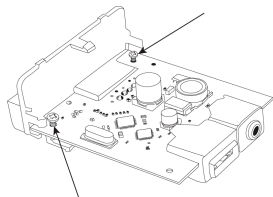


4. X009-FD1 Installation Tech Tip(See page 3 & 4)



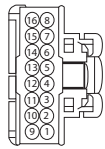
5. X009-RAM USB inoperative

- The circuit board in the center console/armrest OEM USB box must be replaced with the new USB board included with this kit.(See page 12 of the Installation Manual)

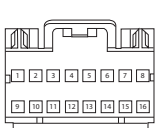


6. OEM Camera connectivity: Connector Pin View


2009-2014 FORD F-150 CAMERA PIN OUT(16 PIN BLACK PLUG)

PIN	WIRE	Function	Rear View Mirror Plug 
1	GN/VT	IGNITION VOLTAGE	
4	BK	GROUND	
8	WH/GN	CAMERA VIDEO SIGNAL(+)	
9	BU/WH	REVERSE	
16	BN/VT	CAMERA VIDEO SIGNAL(-)	
Connector located at the Rear View Mirror.			


2007-2014 CHEVROLET/GMC CAMERA PIN OUT(16 PIN BLACK PLUG)

PIN	WIRE	Function	Rear View Mirror Plug 
6	GY/D-BU	CAMERA VIDEO SIGNAL(+)	
7	GY/OR	CAMERA VIDEO SIGNAL(-)	
8	BK	GROUND	
9	D-BU	REVERSE SIGNAL	
13	PK	IGNITION VOLTAGE	
Connector located at the Rear View Mirror.			

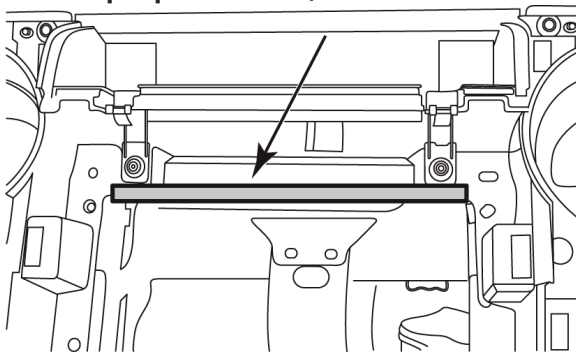
2007-2014 CHEVROLET/GMC UPPER DASH CAMERA PIN OUT(16 PIN BLACK PLUG)

PIN	WIRE	Function	Rear View Mirror Plug
6	GY/D-BU	CAMERA VIDEO SIGNAL(+)	
7	GY/OR	CAMERA VIDEO SIGNAL(-)	
8	BK	GROUND	
9	D-BU	REVERSE SIGNAL	
13	PK	IGNITION VOLTAGE	
Connector located at the Rear View Mirror.			

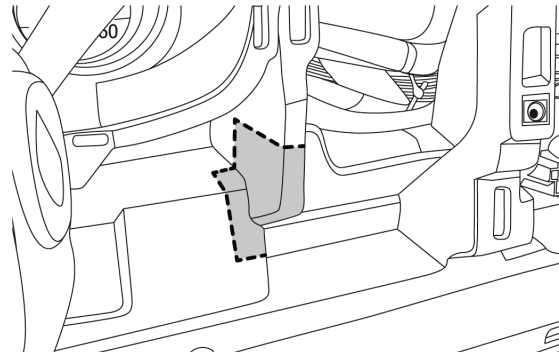
2013-UP RAM CAMERA PIN OUT(52 PIN BLACK PLUG)

PIN	WIRE	Function	Main Radio Harness
31	DG/BR	CAMERA VIDEO SIGNAL(+)	
32	DG/OR	REVERSE SIGNAL	
33	SI	CAMERA SHIELD	
43	BK	GROUND	
44	RD	IGNITION VOLTAGE	
Connector located at the main radio harness.			

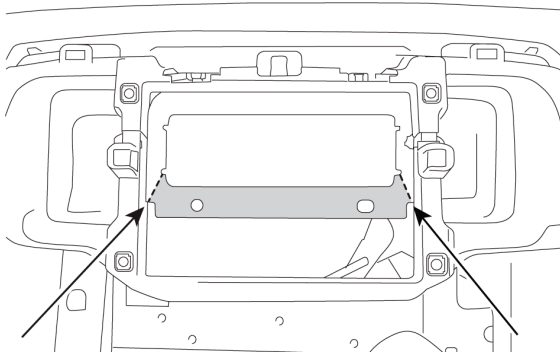
7. Head unit or bezel will not fit into the dash cavity.(Trimming is required in the highlighted areas for proper fitment)



X009-FD1



X009-GM2



X009-RAM

Due to the limited space in the KTX-009-FD1 radio bezel, the Ford Sync port could not be accommodated in the same location. Follow the instructions below to relocate the USB and AUX ports. (3rd party parts are required)



Trim the plastic below the pocket in the vehicles without a center console according to the 3rd party extension of your choice. If vehicle has a center console place the after market extension ports inside of it. (see 3rd party parts below)



Mount the new extension port and run the cables behind the headunit



Connect the cables to the corresponding SYNC connections and secure them.

3rd party parts



Metra: AX-USB-35EXT

Scosche: USBAUXRLX

The 3rd party extensions above have been tested and are recommended for the use of this modification.

In some F-150 vehicles the X009 headunit may sit too high up against the top edge of the radio bezel preventing the face from opening. (See image 1). Use the instructions below to correct the problem. (See image 2)

