

Bluetooth Firmware Update Manual

CDE-147 / CDE-HD148BT / CDE-HD149BT



ALPINE ELECTRONICS OF AMERICA

Bluetooth Firmware Update Manual

CDE-147 / CDE-HD148BT / CDE-HD149BT

Introduction

This manual describes the steps required to update the head unit's Bluetooth firmware. Read all warnings and steps carefully before performing update

Improvements

The update improves the following points:

- Bluetooth audio performance during
- Phonebook download speed

Requirements

- Computer with USB port
- USB memory stick

Caution



- **Do NOT update the Bluetooth firmware while driving.**
- **Do NOT turn off the vehicle or remove power from the Head Unit while the unit is updating. The update will not be performed correctly and the Head Unit may be damaged.**

Notice

- Updating will result in all user information being deleted, including user settings, paired devices and phonebook contacts.

- Please contact Alpine Technical Support in case you have any questions concerning this update process.

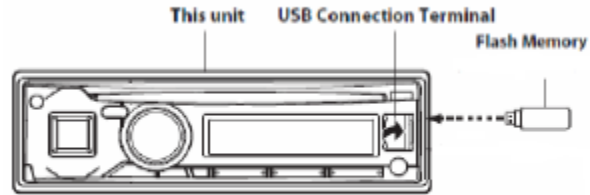
Bluetooth Firmware Update Instructions

USB front:

- CDE-147

USB rear:

- CDE-HD148BT
- CDE-HD149BT



Head Unit Setup Buttons Illustration

The illustration shows the buttons that will be used during the update procedure. This illustration is based on the CDE-HD149BT model. The button locations will be different on some models. Please refer to the owner's manual for your specific model.

ROTARY ENCODER/ENTER



AUDIO/SETUP

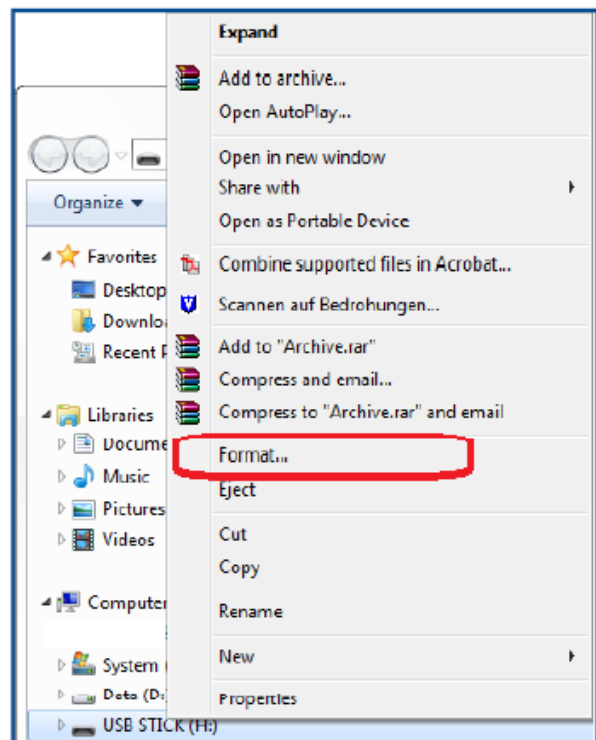
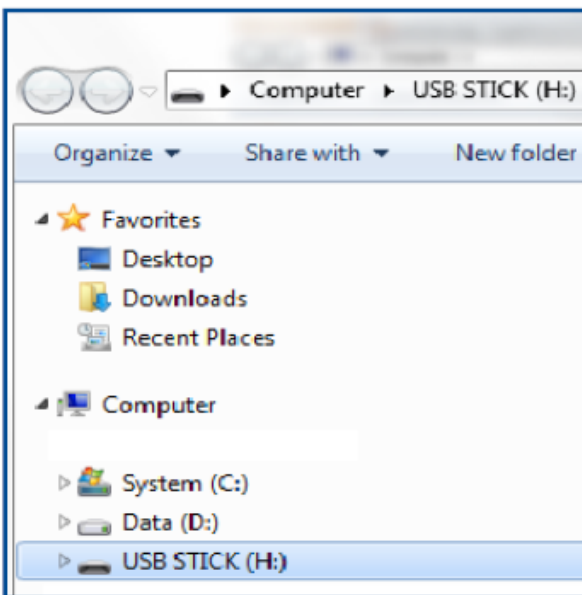
1. Format the USB stick



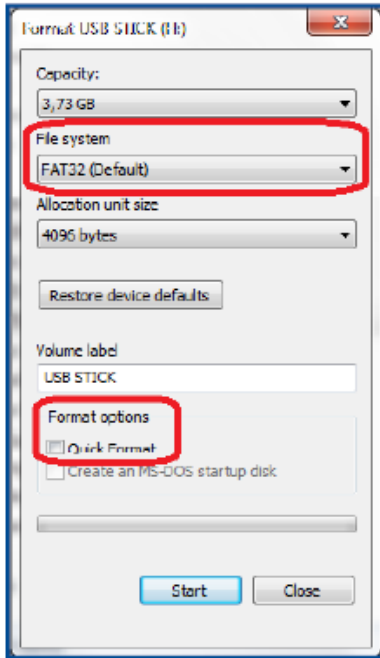
WARNING – Do not update the Bluetooth firmware while driving

1. Plug in the USB stick.

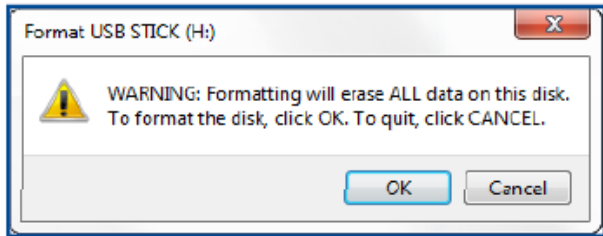
2. Right click the USB drive and select “Format...”



3. Set the options as shown below:
- File system: 'FAT32' (Default)
 - Make sure to uncheck "Quick Format"

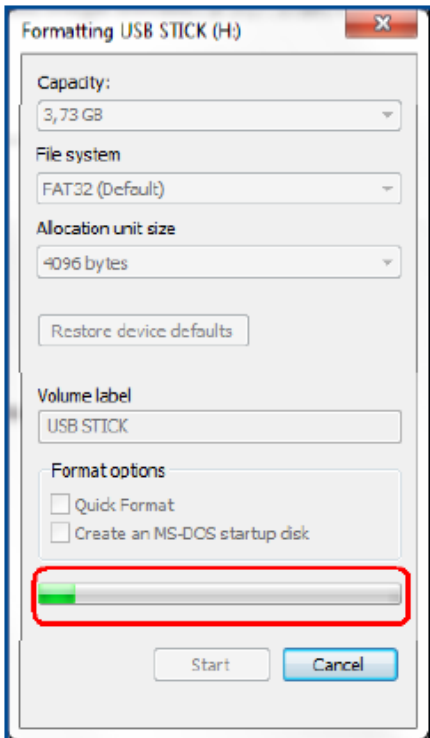


4. Before clicking OK, make sure that you have selected the correct drive

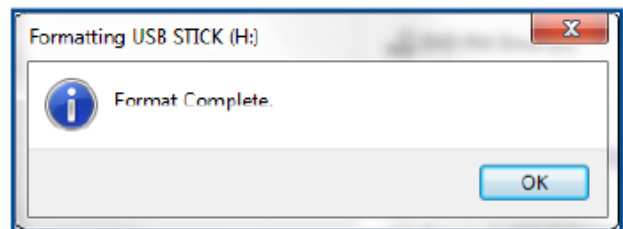


WARNING - The selected drive will be erased completely

5. The system formats the USB stick. This can take up to 10 minutes.



6. After formatting has finished Push OK

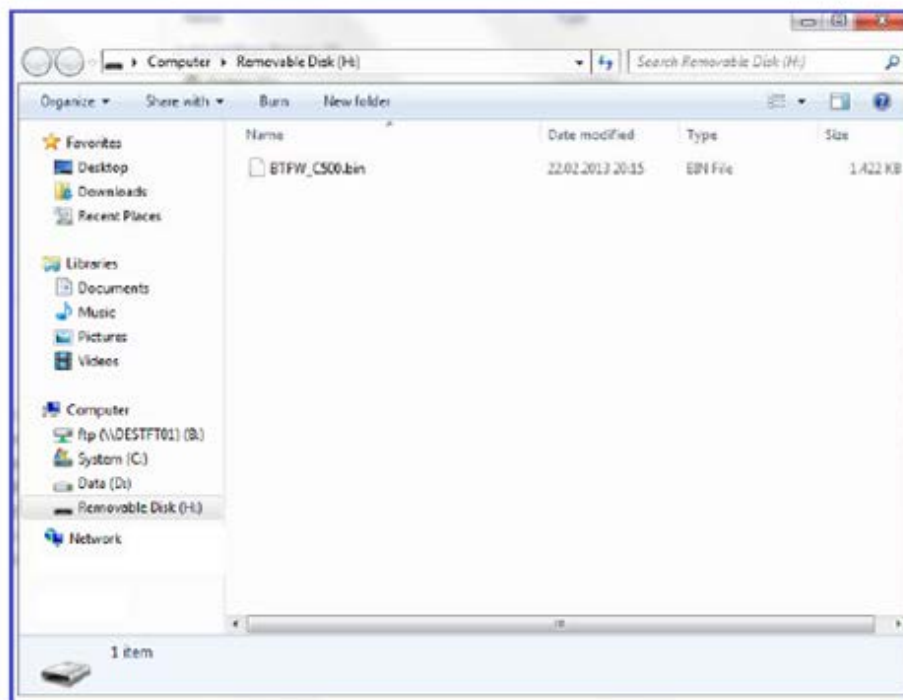


2. Copy the file to the USB stick

1. Copy the update file downloaded from the Alpine support website "BTFW_CS10.bin" into the root directory of the USB memory stick.



Please, be sure that the update file is the only file on the USB memory stick.

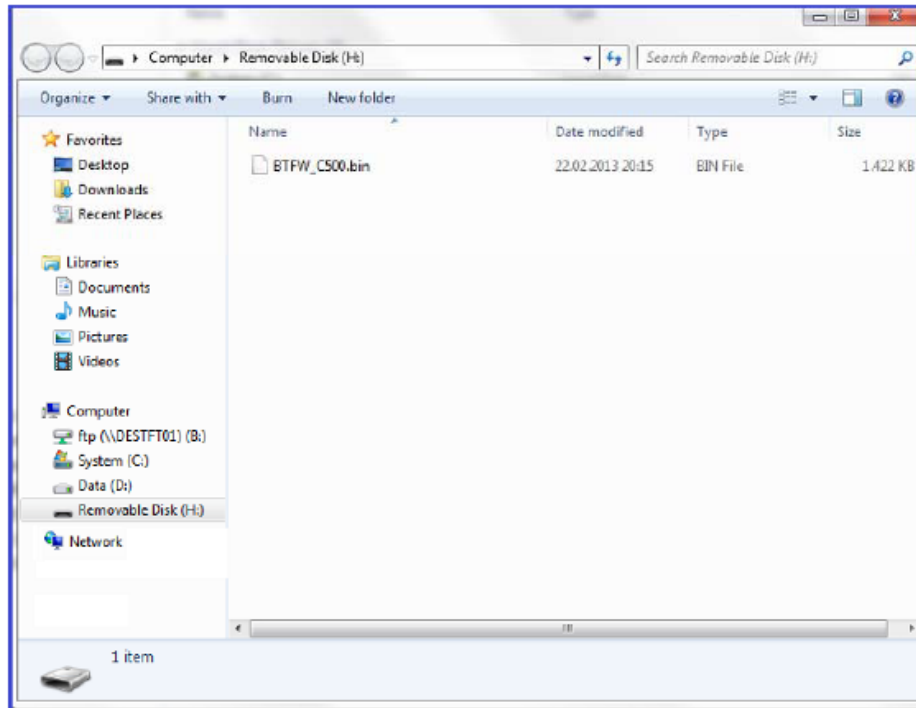


2. Copy the file to the USB stick

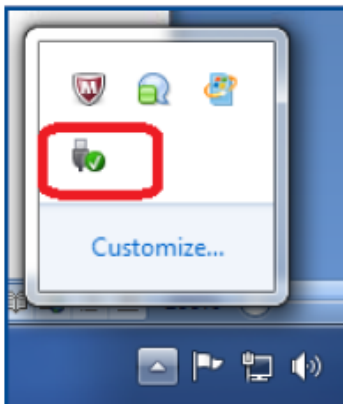
1. Copy the update file downloaded from the Alpine support website "BTFW_C500.bin" into the root directory of the USB memory stick.



Please, be sure that the update file is the only file on the USB memory stick.



2. Make sure to "remove the USB stick safely" before unplugging it



3. A message is displayed once it is safe to remove the USB stick



3. Updating the head unit



Do NOT update the Bluetooth firmware while driving.

1. Turn on ACC



2. Insert the USB memory stick

3. Push the AUDIO/SETUP button for at least 2 seconds to access the setup mode



4. Turn the rotary encoder, select "Bluetooth" and press ENTER (push the rotary)



5. Turn the rotary encoder, to select "FW Update" and press ENTER



6. Turn the rotary encoder to select "FW Update YES", and press ENTER



7. "Firmware Updating Don't Touch Any Button" will appear on the screen for approximately 10 minutes



Note: The display of CDE-HD148BT will show "Updating" blinking.



Please do not power off the unit and do not push any button, while the unit displays "Firmware Updating Don't Touch Any Button".

8. "Update End Please Push Any Button" will appear on the display



Note: The CDE-HD148BT will display "Updated"

9. Turn off ACC, remove the USB memory stick and turn ACC on

4. Confirming the update

1. Push the AUDIO/SETUP button for at least 2 seconds to access the setup mode



2. Turn the rotary encoder to select "Bluetooth" and press ENTER



3. Turn the rotary encoder to select "FW Version" and press ENTER



4. The version will be displayed. Please check that the value "C510" is shown on the display.

