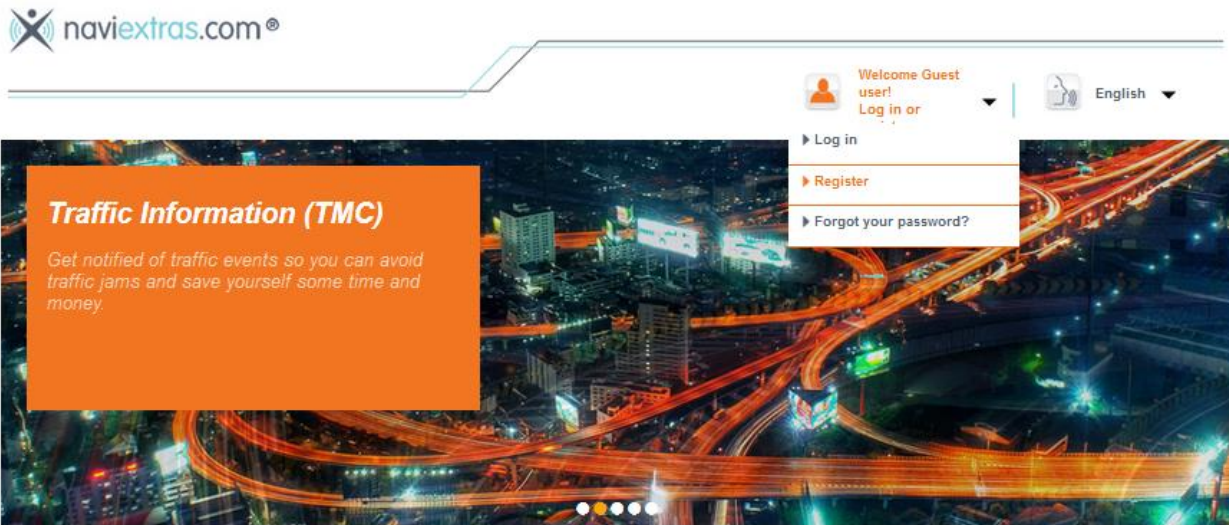


Alpine Mapping Update INE-W977HD, INE-W987HD, X208U, X308U, X209-WRA, X209-WRA-OR X409-WRA, X409-WRA-JL

Go to Naviextras.com and register to create user name and password



Select CONTINUE WITH DOWNLOADING TOOLBOX

You have successfully created your new user account.



Some features of this site is only available after verification of your e-mail address. Please check your e-mail inbox, and click on the first link in the verification e-mail to finish the registration process.

This step is required in order to prevent others using your e-mail address for registration.

I use the site as an end user

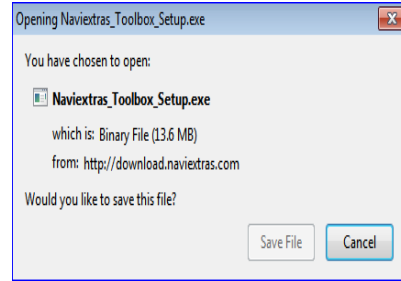
If you are an end user and would like to purchase products for private usage, please download Naviextras Toolbox PC software, that is necessary for purchasing and installing maps and extras onto your device.

CONTINUE WITH DOWNLOADING TOOLBOX >>

Select Download



Select Save File and Install to your computer



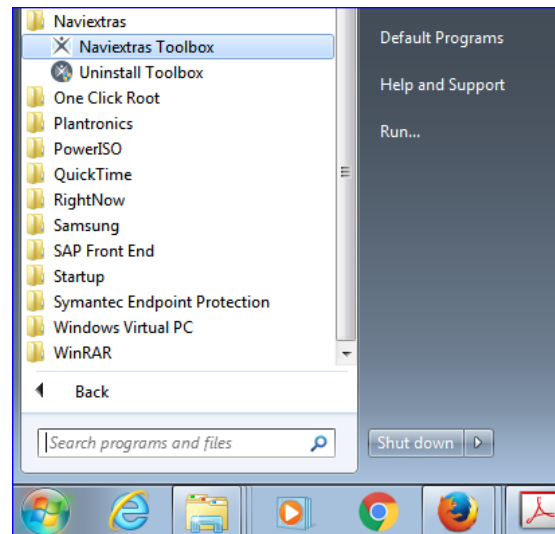
Starting the Naviextras Program

Select Windows Start Button

Select All Programs

Select Naviextras Toolbox Folder

Select Naviextras Toolbox Program.



This is what it should look like for now,

Let's proceed to next step/page



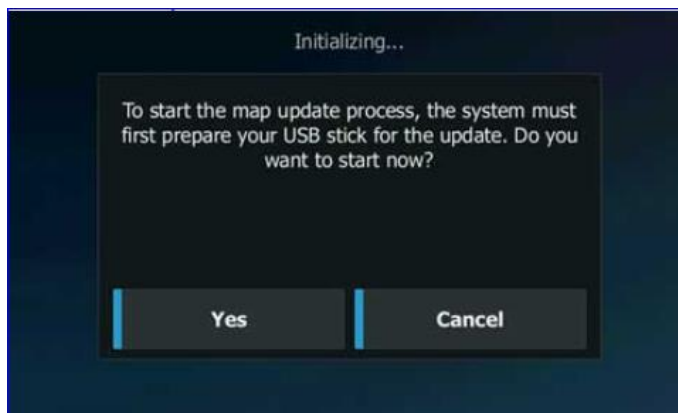
Map Update Process

1. Connect USB Thumbdrive to USB Port of Navigation System
2. Go to Navigation Source → Swipe from right to left → Setup

→ Click “ UPDATE”



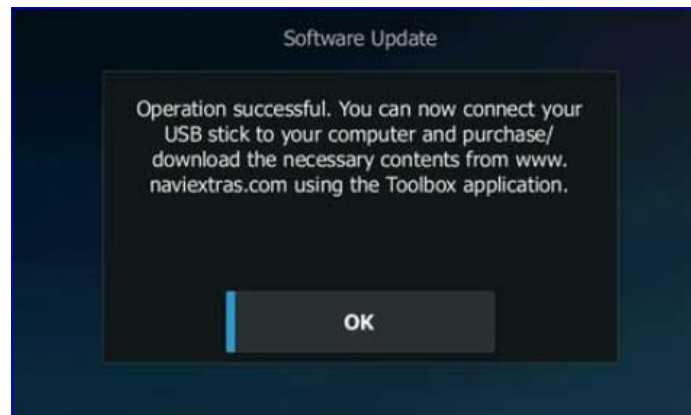
3. Press “ YES “



4. Do not disconnect the USB stick and do not power off the unit.

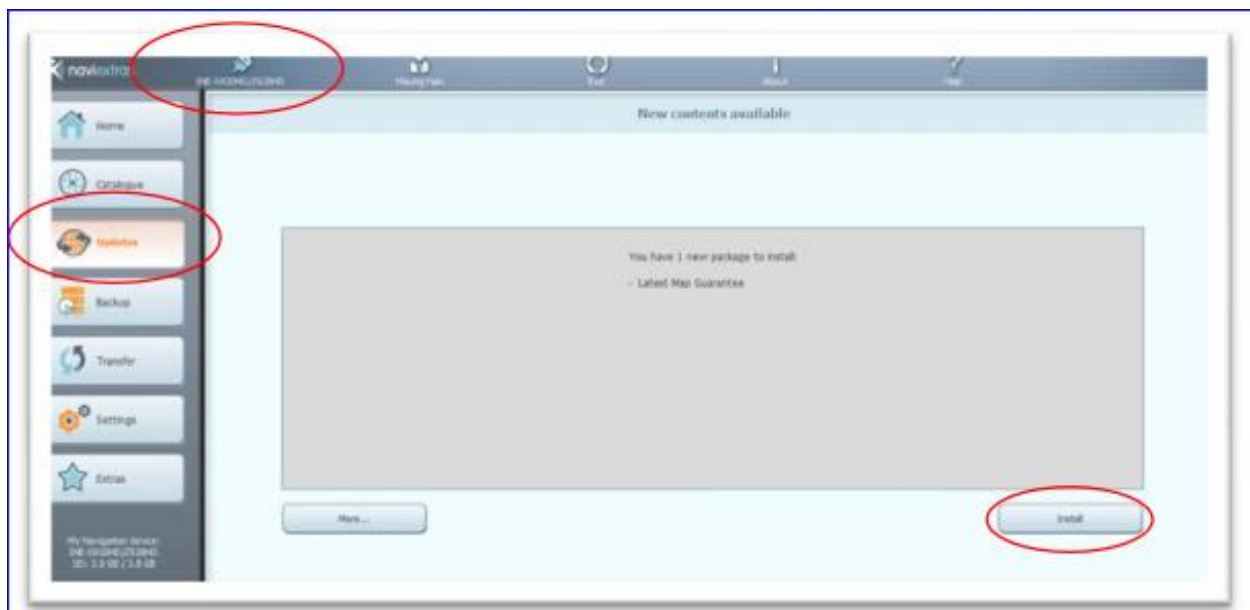


5. Confirm with “OK” and remove the USB stick from your navigation device.



Plug USB stick into computer.

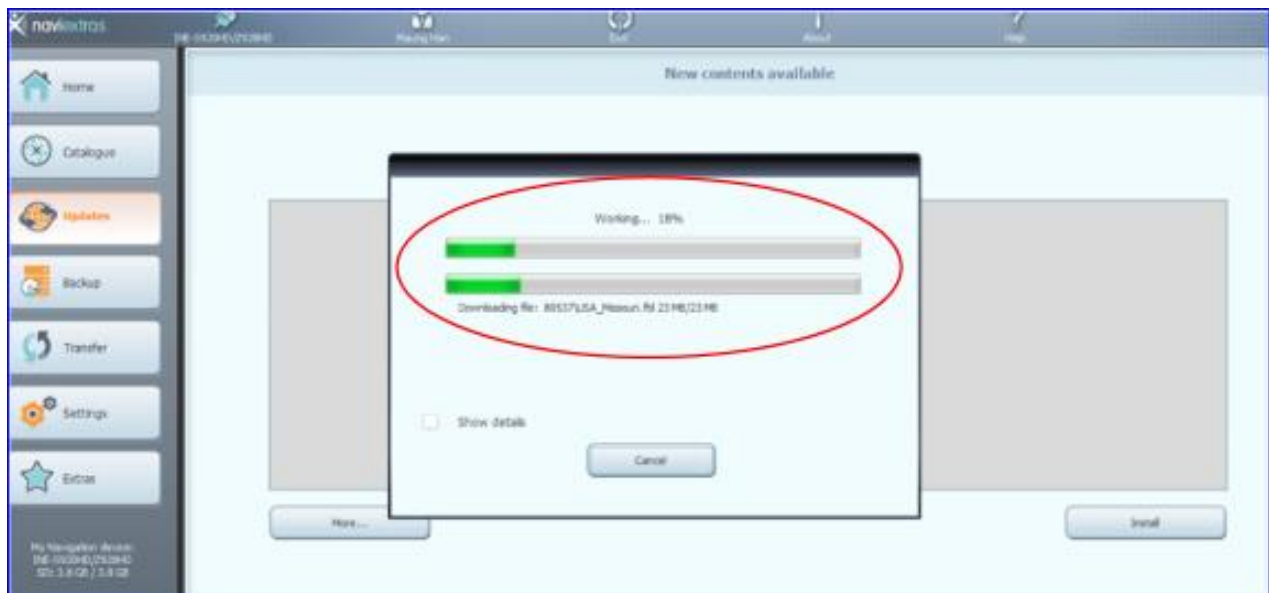
When prompted, enter the login name and password that you registered. Your Navigation model will be automatically recognized from the information in the USB Stick. If a free Map is available, it will be shown in the “ Updates “ menu screen as show below.



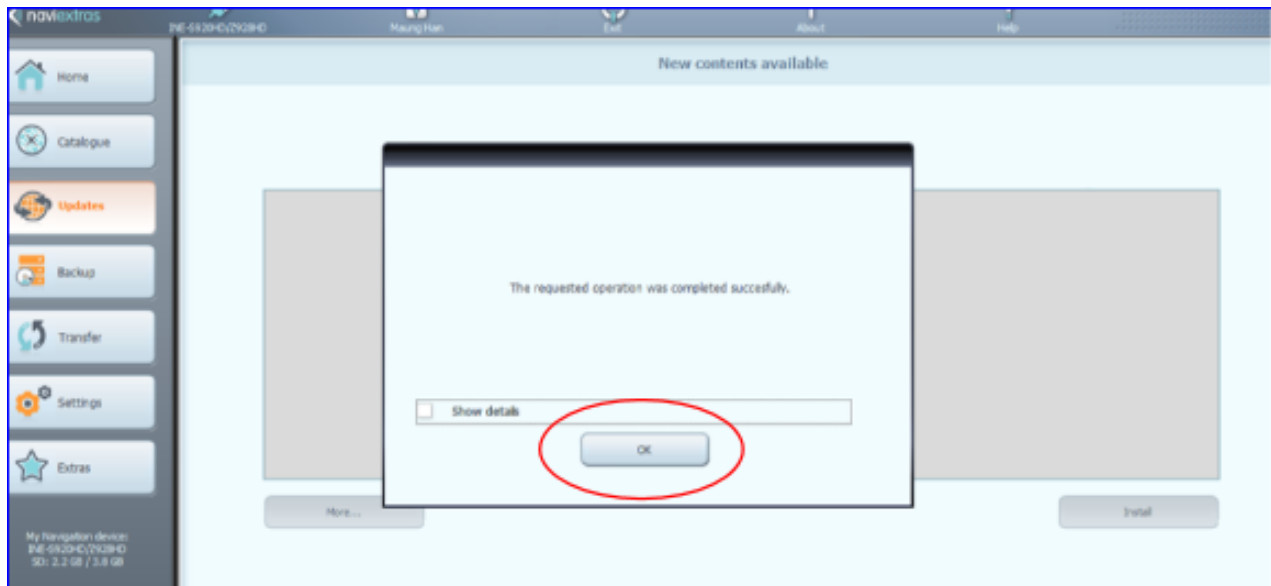
6. Click on “Install” button and select “Yes, I want to do a backup”



7. A progress bar will be displayed while the content is being downloaded.



Upon completion of download, you will see the success message below. Click OK Button



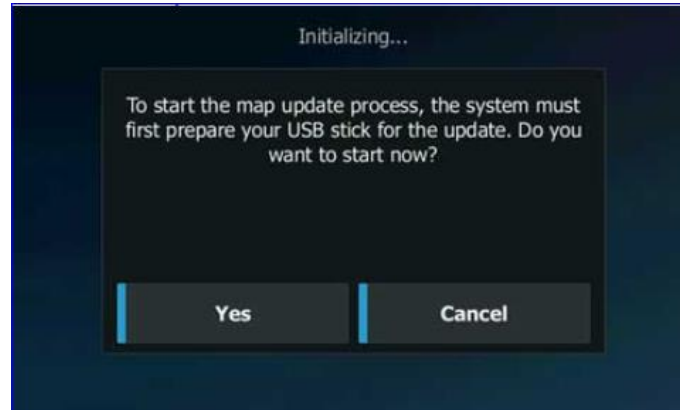
8. After clicking OK, the menu on the left will be changed from 'Updates' to 'Devices' and it will show "Your device is up to date" message. Safely remove the USB stick from your PC and reconnect to USB Port of Navigation System.

9. Go to Navigation Source → Swipe from right to left → Setup → Click "UPDATE"



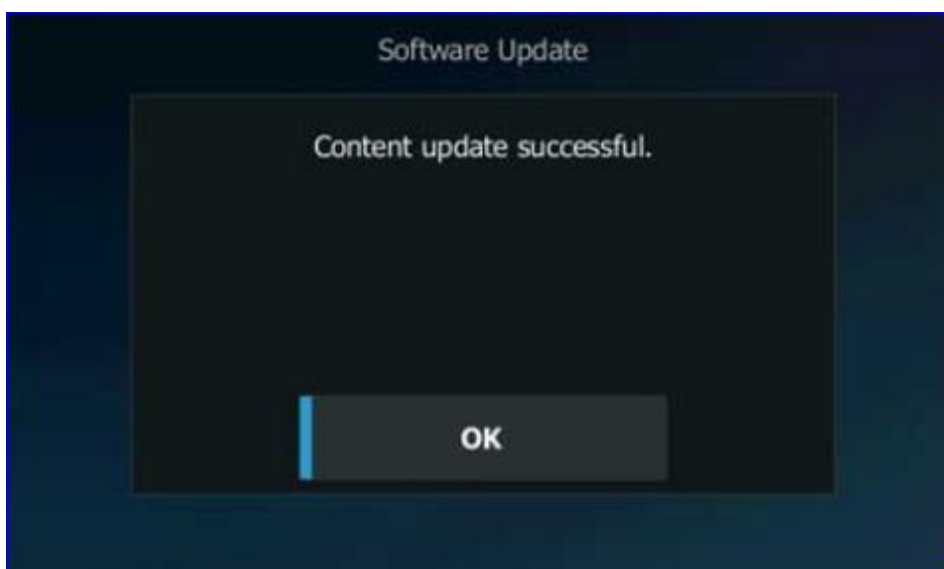
10. Press “Yes”

- 11. The Update process will take up to 20 minutes.
Do not disconnect the USB Stick and do not power off the unit.**



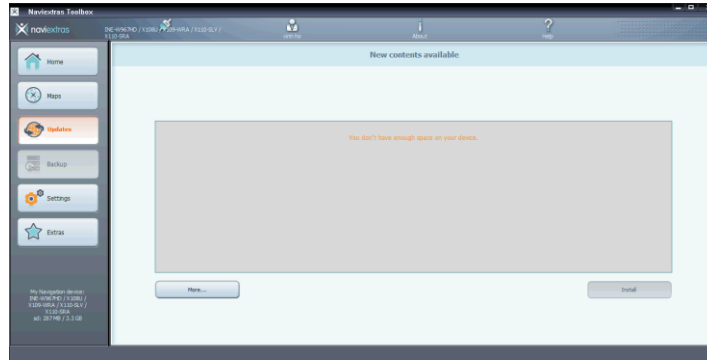
- The Update process will take up to 20 minutes.
Do not disconnect the USB Stick and do not power off the unit.**

12. Press “OK” to finalize the Update process,
Remove the USB stick from your navigation device,
system will be restart.

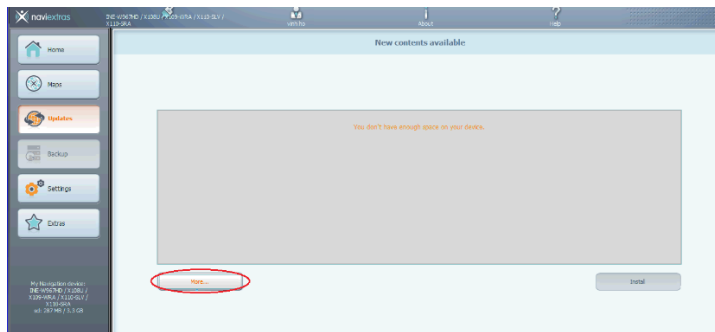


Troubleshooting

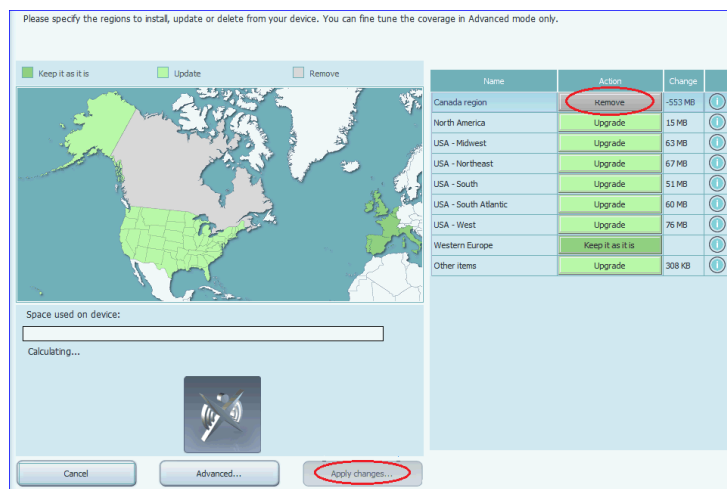
“ You don't have enough space on device “



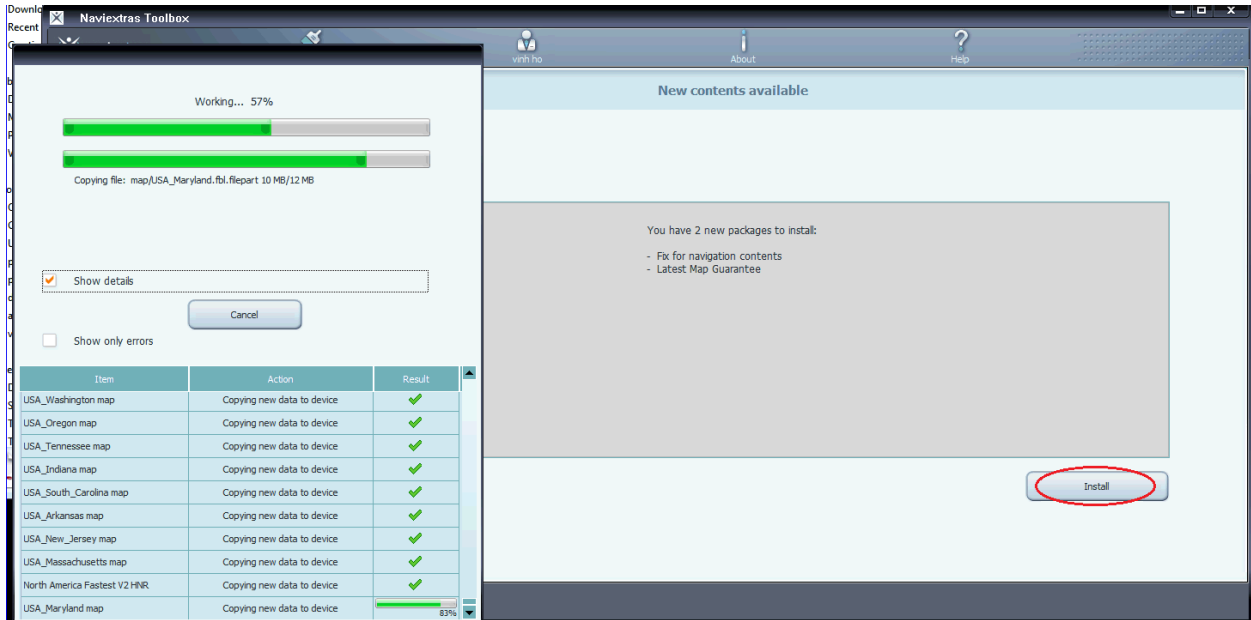
Select More



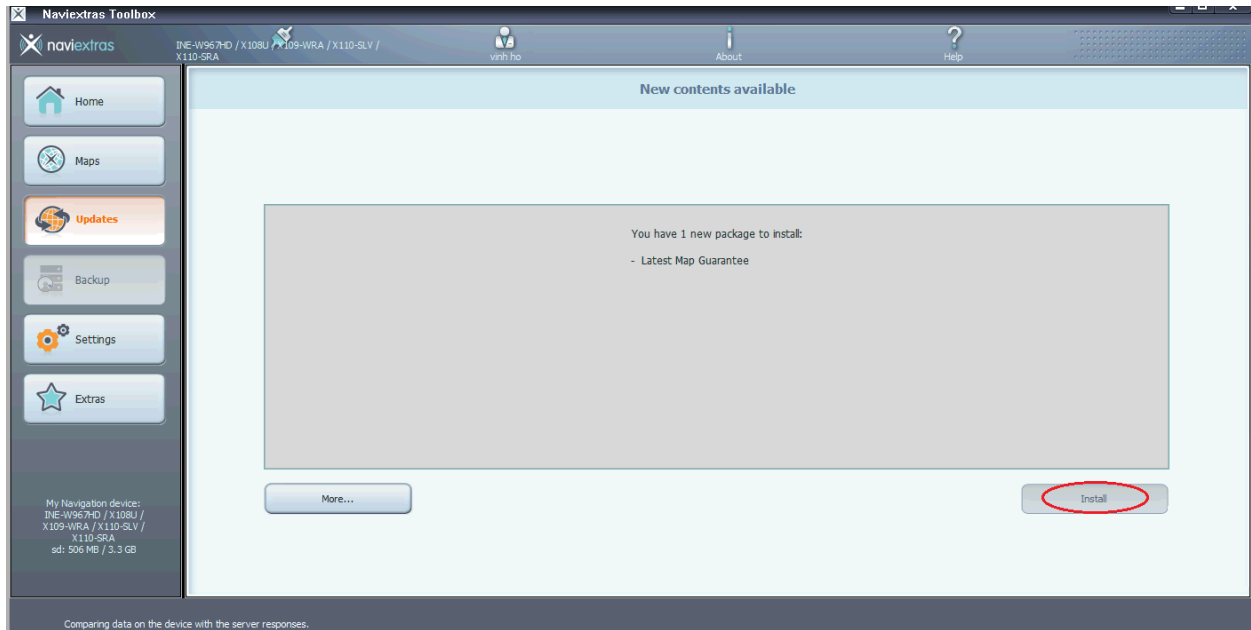
Select Remove ,then select Apply Changes



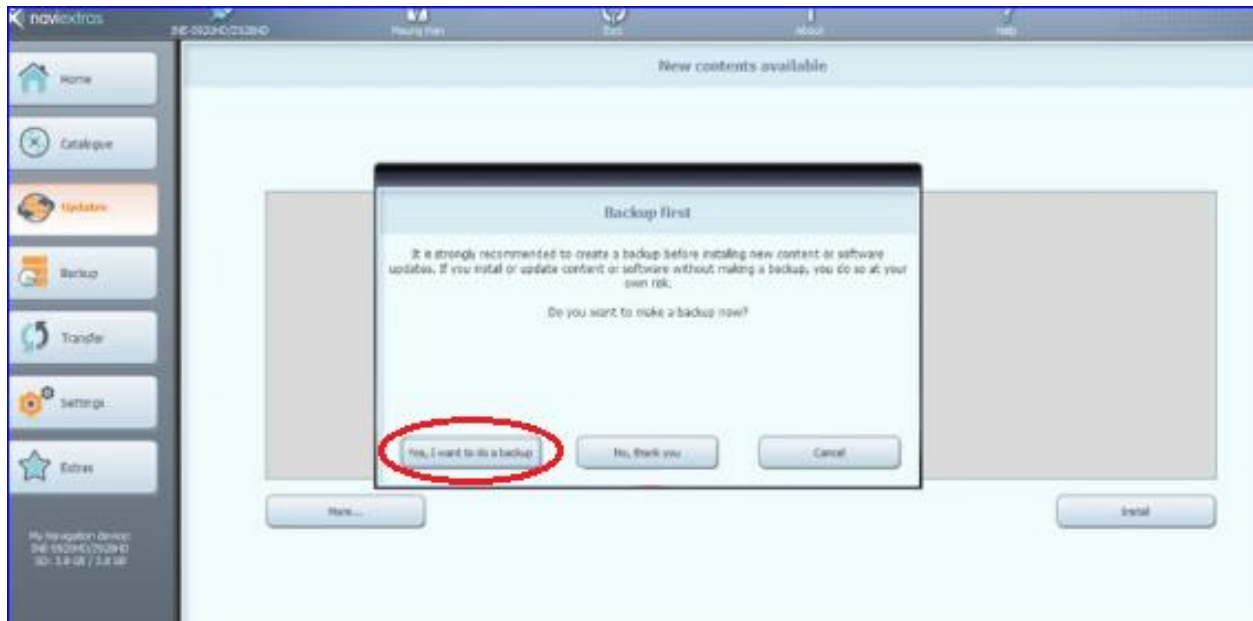
Select "Install" to install 1 of 2 packages



Select "Install" again to install remaining map package



Click on “Install” button and select “Yes, I want to do a backup” if it ask for it.



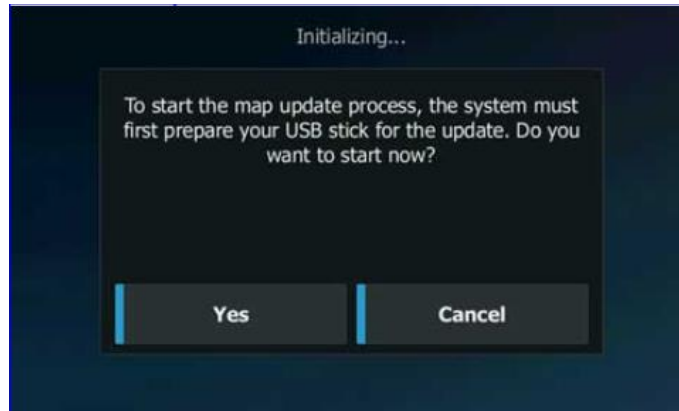
Once Backup is finish disconnect USB Stick and reconnect to USB Port of Navigation System.

Go to Navigation Source Swipe from right to left Setup
➡ Click “ UPDATE”



Press “Yes”

**The Update process will take up to 20 minutes.
Do not disconnect the USB Stick and do not power off the unit.**



**The Update process will take up to 20 minutes.
Do not disconnect the USB Stick and do not power off the unit.**

13. Press “OK” to finalize the Update process,
Remove the USB stick from your navigation device,
system will be restart.

