

Software Update Procedure

INE-W987HD

7-Inch Mechless Navigation Receiver

Introduction

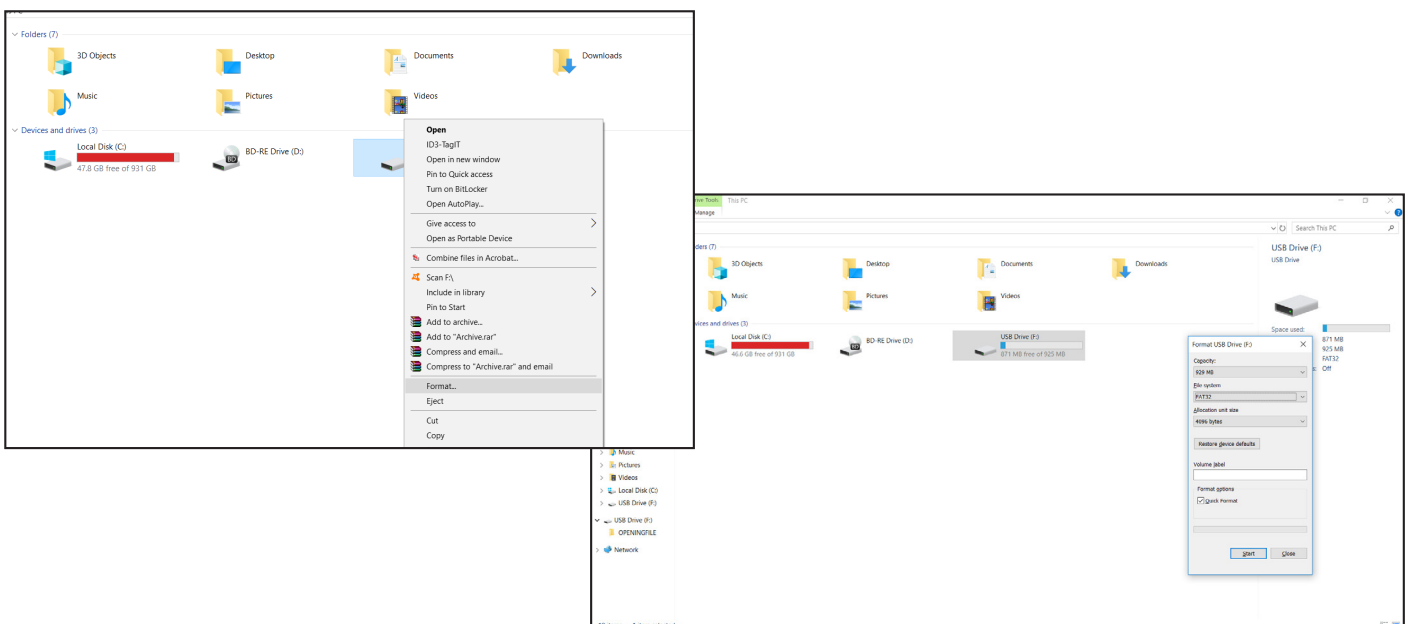
- This installation manual is designed to take you through the step-by-step installation of the firmware version 1.007 update and the navigation update into an INE-W987HD. Please familiarize yourself with the owners manual (found at www.alpine-usa.com/support) and if you still have additional questions please call 1-800-TECH-101.
- This update includes the following:
 - Incorrect transition from dual screen to navigation menus
 - Map always starts in night mode
 - Lane guidance is cut off in split screen
 - Back button does not return to navigation settings

Caution!

- **Do NOT** turn off vehicle's ignition or head unit's power switch while updating. Some modern vehicles may shut down the ignition (ACC) if the engine is not running for some time. If you are not sure if this applies to your car, leave the engine running while the update is in progress.
- **Do NOT** remove the USB flash memory while updating.
- **Do NOT** press any buttons while updating.
- **Do NOT** update while driving.
- Failing to follow any of these cautions could cause damage to the head unit.

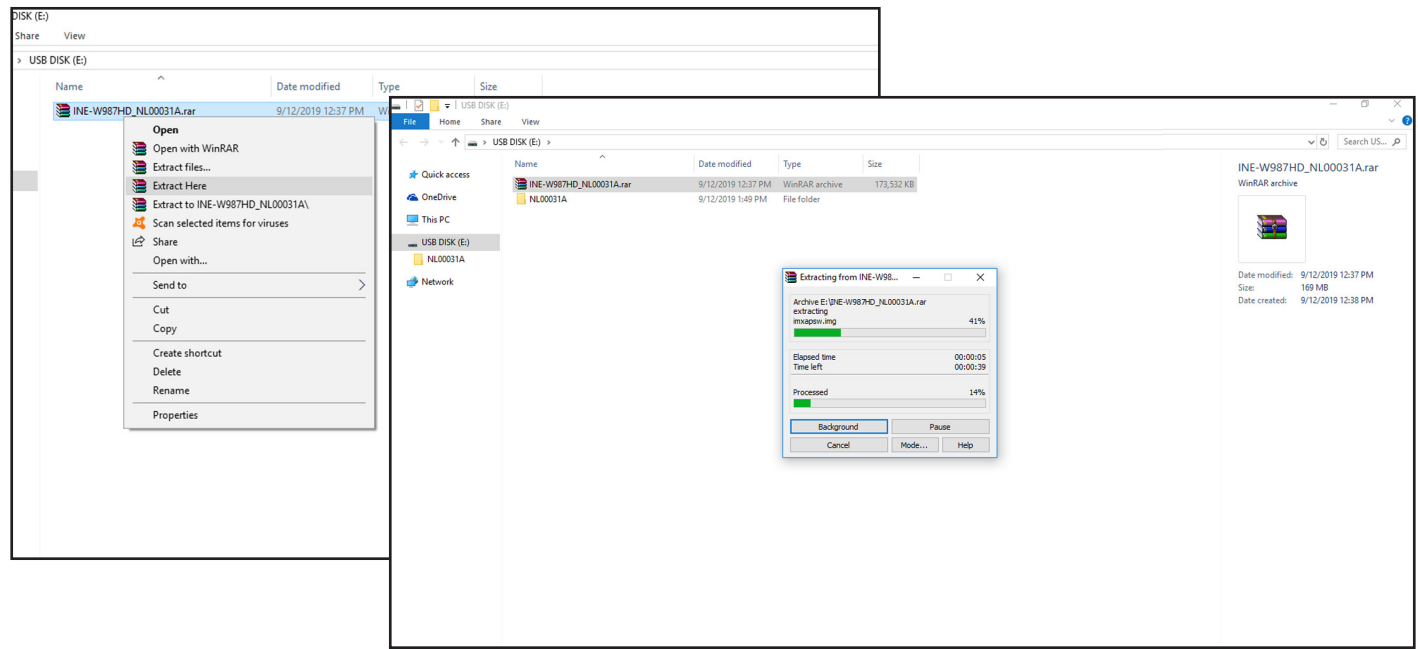
Step 1: Format The Flash Drive

- 1-1 Only flash drives formatted to FAT32 can be read by the head unit. This means that your flash drive can not be formatted to anything else including NTFS, exFAT, etc.
- 1-2 In Windows the drive can be formatted by right clicking on the drive in file explorer and selecting format as shown in the pictures below.

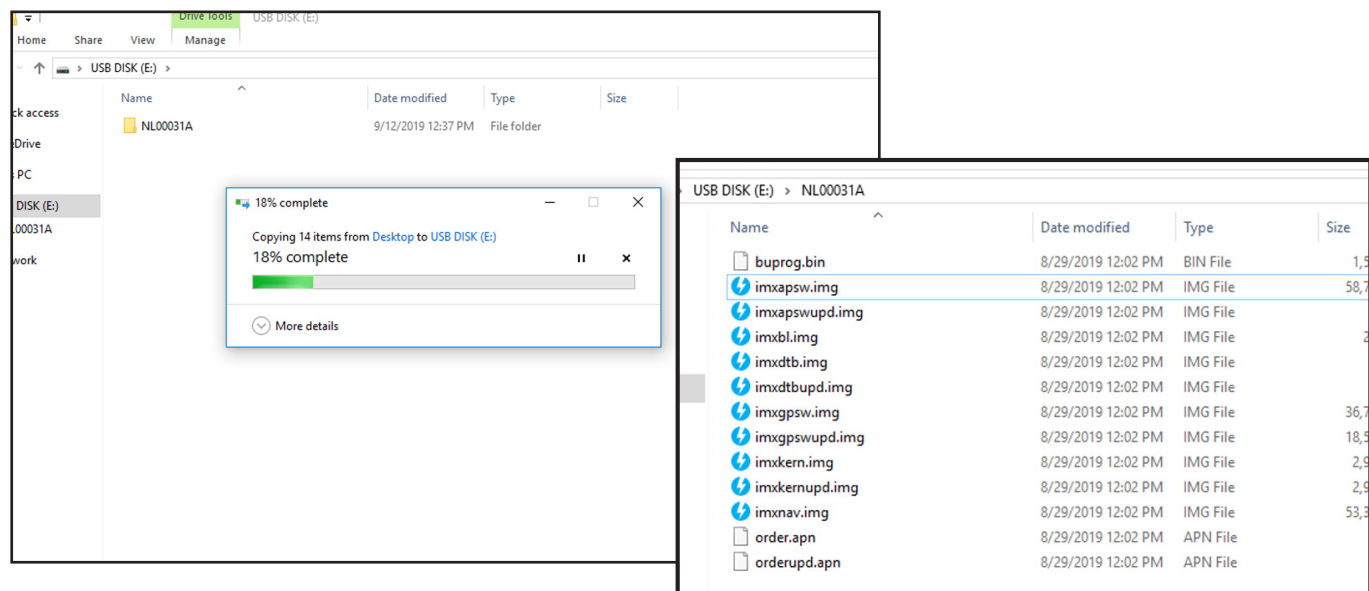


Step 2: Copy The Audio Update Files To The Flash Drive

- 2-1** Extract the downloaded files using a program like WinZip to your computer. If you don't have a program that handles zip files on your computer you will need to install one.



- 2-2** The extracted folder is named NL00031A. Copy the unzipped folder to your flash drive by copy and pasting or dragging and dropping the file. The pictures below show the folder NL00031A on the flash drive and the folders in it. Note: You can **NOT** change the file names or folder names. The head unit will not recognize the files if you do.

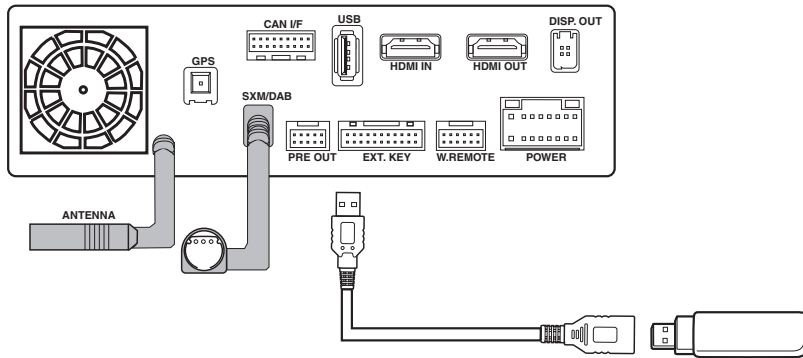


Notes:

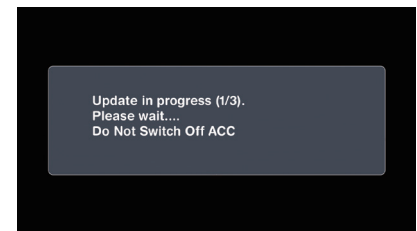
- *Do **NOT** store any other files on the flash drive. If there is anything on the drive besides the update files it will not read correctly.
- *Certain manufacturer's USB memory may not work. If so, try a different manufacturer's USB memory.

Step 3: Copy The Update Files To The Head Unit

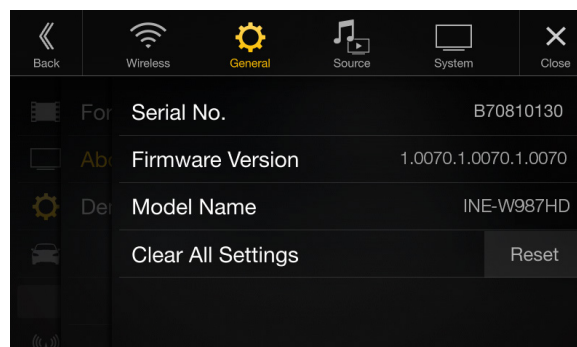
- 3-1** Plug the flash drive into the USB connector of the head unit. The USB extension is typically ran from the back of the head unit to either the glove box or center console areas of the vehicle depending on the original installation.



- 3-2** Turn on the vehicle's ignition to power on the head unit. **Do NOT turn off the ignition or the power of the head unit while the system is updating!**
- 3-3** The head unit will automatically read the files on the flash drive and an update message will appear on the screen. Press the "OK" button when it asks. The update will begin in about 20 seconds and will take about 3-4 minutes to complete.



- 3-4** When the software update is finished the head unit will automatically restart.
- 3-5** Turn off the vehicle's ignition, remove the USB memory, and turn the ignition back on to finalize the software update. Please check the version number of the Software in the Setup menu of the INE-W987HD (MENU/SETUP/GENERAL/ABOUT). As always to get into the settings the parking brake sequence will need to be done. The parking brake needs to be engaged, then released, then engaged again. If the software version number is displayed as "1.0070.1.0070.1.0070", the update procedure was successful



Troubleshooting Guide

Symptom		Possible Cause	Remedy
1	Head unit will not read flash memory.	The downloaded software was not unzipped.	Refer to Step 2. The .zip file will need to be unzipped first using your program of choice (for example, WinZip, WinRAR, Izarc, etc).
		There are other files on the flash drive.	The flash drive should be freshly formatted (refer to Step 1) and the only files on it should be the downloaded files as shown in Step 2.
		The file folder name was changed or put into a different folder.	Make sure only the file that is shown in step 2 is copied over.
		The USB port was installed incorrectly.	Make sure the port is working correctly by plugging in an iPod or flash memory with a few MP3's on it and seeing if it will play the music. If that's not working then there's no way for the update to work. Try plugging the flash drive directly into the tuner without the extension cable.