

Software Update Procedure

iLX-W650

7-Inch Mech-Less Receiver with Apple CarPlay and Android Auto with Shallow Chassis

Introduction

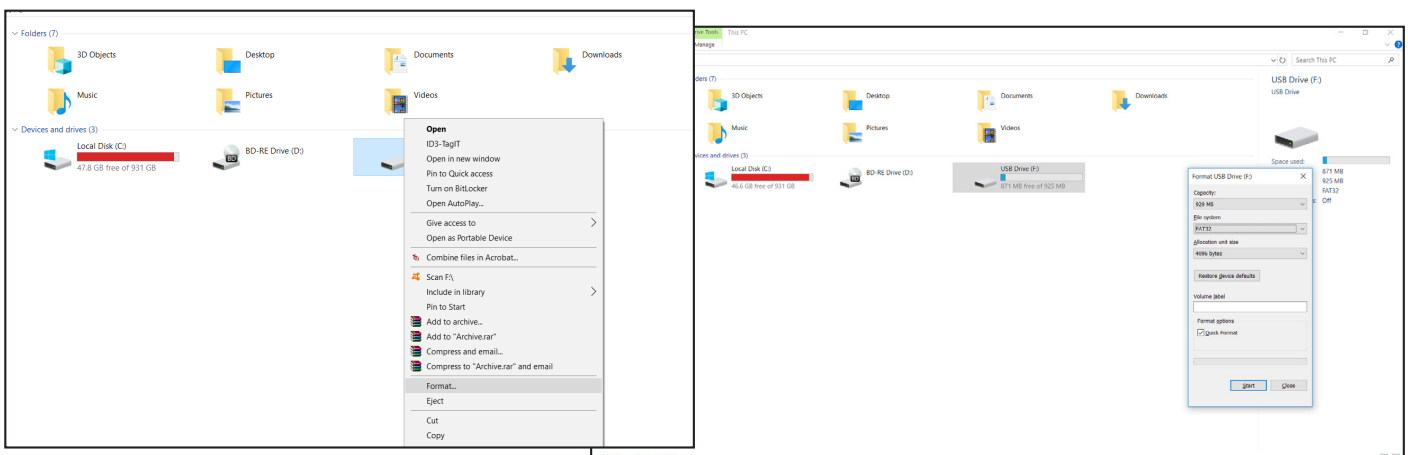
- This installation manual is designed to take you through the step-by-step installation of the firmware version V1.021_1101/MCU F037 update for the iLX-W650. Please familiarize yourself with the owners manual (found at www.alpine-usa.com/support) and if you still have additional questions please call 1-800-TECH-101.
- This firmware update corrects issues with the following:
 - Saving crossover settings
 - Steering wheel controls for Android Auto and Apple CarPlay (Prev/Next, Play/Pause, Answer/End)
 - Bluetooth sound quality
 - Subwoofer gain decreasing when adjusting the parametric EQ
 - Subwoofer output
 - Parametric EQ Q-Factor improvements for sound tuning
 - Improved category search function for SiriusXM
 - Sub volume spikes after receiving a notification on Android Auto or Apple CarPlay
 - Head unit freezes when transferring phone book
 - Chirping sound when plugging in LG7 phone
 - Improved call audio quality when using Android Auto
 - Audio distortion of Apple CarPlay notifications.
 - Parametric EQ Presets do not take affect.
 - Compatibility improved for iPhone 11 and up.

Caution!

- **Do NOT turn off vehicle's ignition or head unit's power switch while updating. Some modern vehicles may shut down the ignition (ACC) if the engine is not running for some time. If you are not sure if this applies to your car, leave the engine running while the update is in progress.**
- **Do NOT remove the USB flash memory while updating.**
- Do NOT press any buttons while updating.
- Do NOT update while driving.
- Failing to follow any of these cautions could cause damage to the head unit.

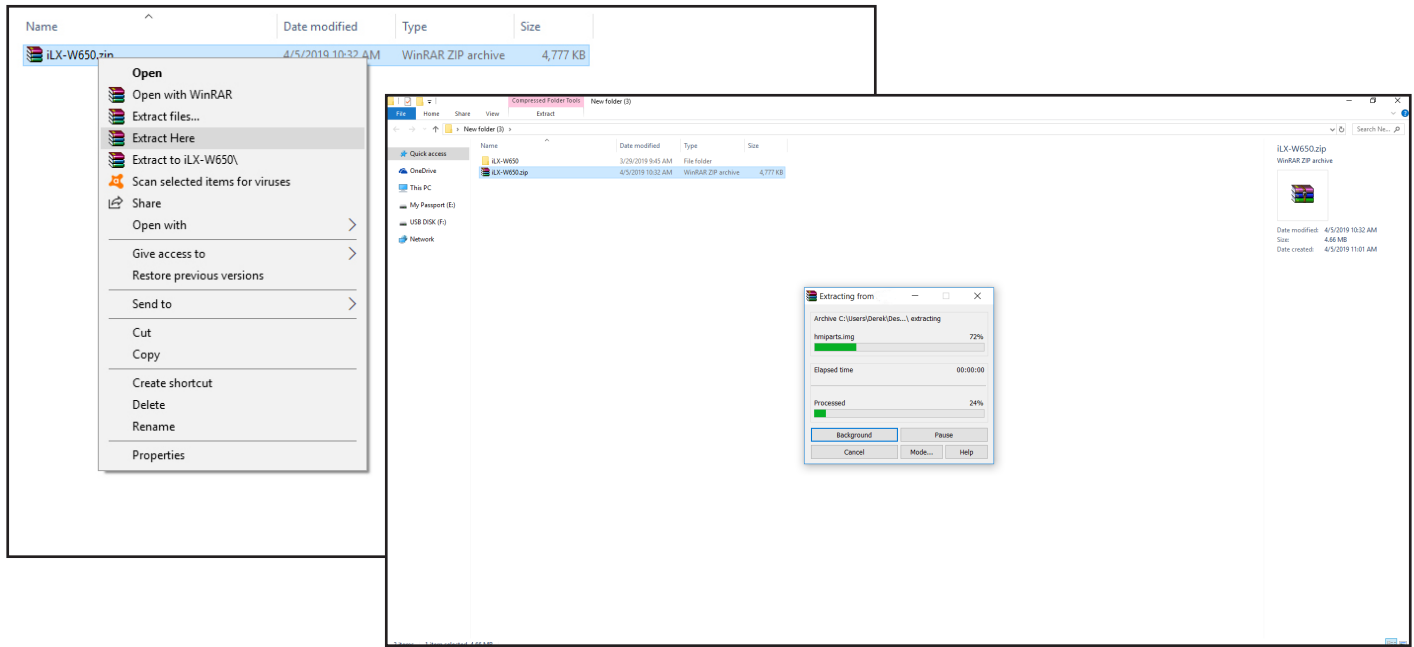
Step 1: Format The Flash Drive

- 1-1 Only flash drives formatted to FAT32 can be read by the head unit. This means that your flash drive can not be formatted to anything else including NTFS, exFAT, etc.
- 1-2 In Windows the drive can be formatted by right clicking on the drive in file explorer and selecting format as shown in the pictures below.

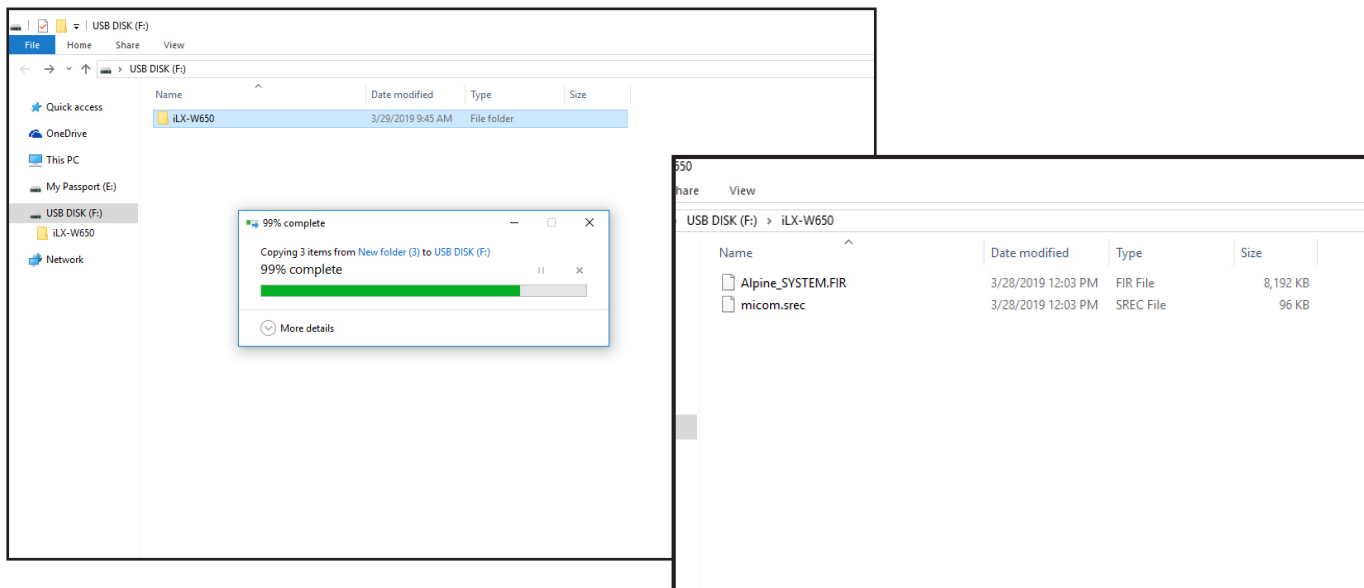


Step 2: Copy The Audio Update Files To The Flash Drive

2-1 Extract the downloaded files using a program like WinZip to your computer. If you don't have a program that handles zip files on your computer you will need to install one.



2-2 Once extracted you will see a folder named iLX-W650. Copy the unzipped folder to your flash drive by copy and pasting or dragging and dropping the file. The pictures below show the folder iLX-W650 on the flash drive and the folders in it. Note: You can **NOT** change the file names or folder names. The head unit will not recognize the files if you do. **DO NOT** just copy the files to the drive. You need to copy the folder.

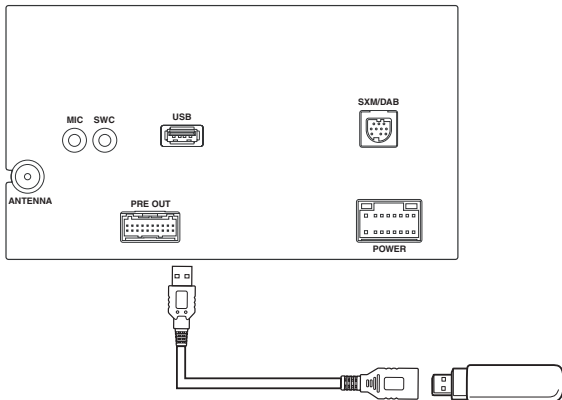


Notes:

- *Do **NOT** store any other files on the flash drive. If there is anything on the drive besides the update folder it will not read correctly.
- *Certain manufacturer's USB memory may not work. If so, try a different manufacturer's USB memory.

Step 3: Copy The Update Files To The Head Unit

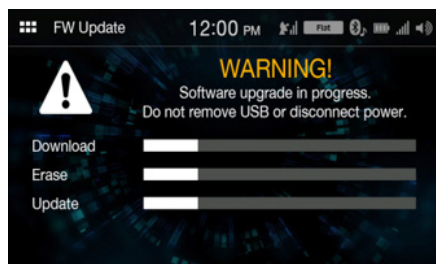
- 3-1 Plug the flash drive into the USB connector of the head unit. The USB extension is typically ran from the back of the head unit to either the glove box or center console areas of the vehicle depending on the original installation.



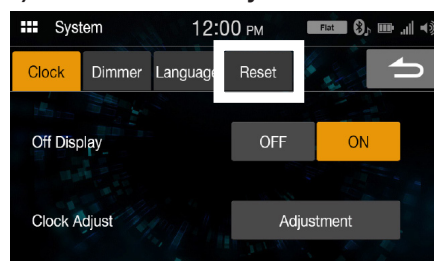
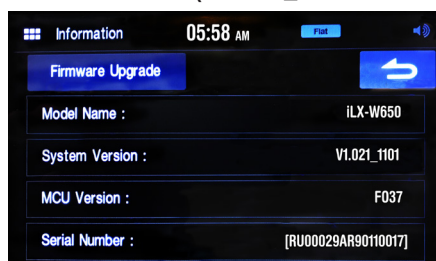
- 3-2 Turn on the vehicle's ignition to power on the head unit. **Do NOT turn off the ignition or the power of the head unit while the system is updating!**
- 3-3 Go to MENU/SETUP/INFORMATION/FW UPGRADE. Note: as always to get into the settings you will need to do the parking brake sequence. Engage the parking brake, release the parking brake, and engage it a 2nd time.



- 3-4 Push FW Upgrade. This process should take about 2 minutes. The head unit will reboot when the update has finished.



- 3-5 Check version (V1.021_1101/MCU F037). Then do a factory reset. SETUP/SYSTEM/RESET



Troubleshooting Guide

	Symptom	Possible Cause	Remedy
1	Head unit will not read flash memory.	The downloaded software was not unzipped.	Refer to Step 2. The .zip file will need to be unzipped first using your program of choice (for example, WinZip, WinRAR, Izarc, etc).
		There are other files on the flash drive.	The flash drive should be freshly formatted (refer to Step 1) and the only files on it should be the downloaded files as shown in Step 2.
		The file folder name was changed or put into a different folder.	Make sure only the file that is shown in step 2 is copied over.
		The USB port was installed incorrectly.	Make sure the port is working correctly by plugging in an iPod or flash memory with a few MP3's on it and seeing if it will play the music. If that's not working then there's no way for the update to work. Try plugging the flash drive directly into the tuner without the extension cable.